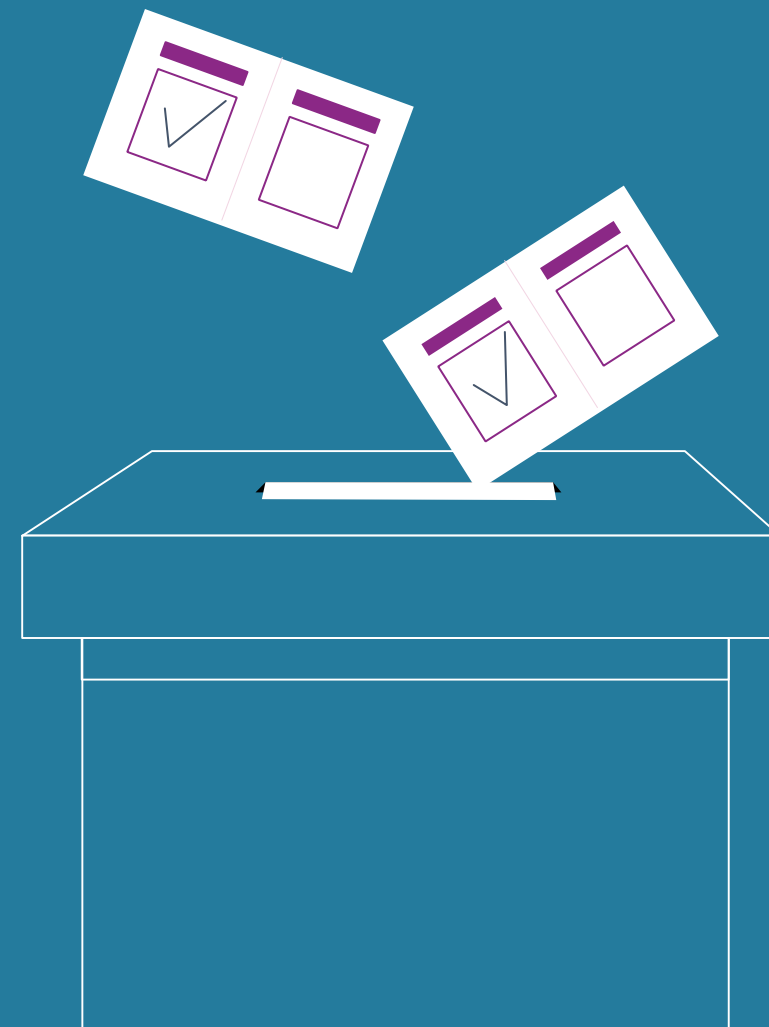


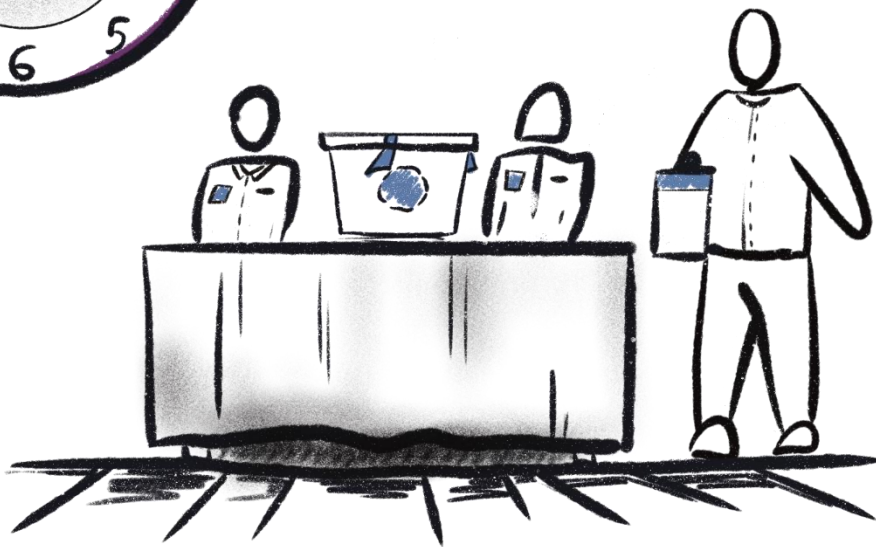
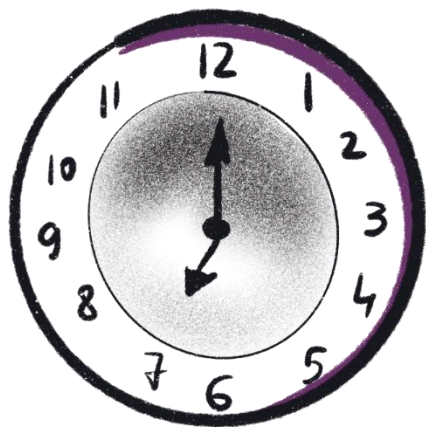
Promo-LEX Election Observation Mission of 2024 Presidential Elections and Constitutional Referendum

ELECTION DAY FINDINGS AND CONCLUSIONS



Opening of Polling Stations

Earlier than 7:00 AM or with a delay (representative sample)



86 cases

The singing of the national anthem at the opening of the polling station and the display of the national flag (representative sample)



121 PS

Accessibility of polling stations for people with mobility difficulties (representative sample)



**237 PS are not
accessible**

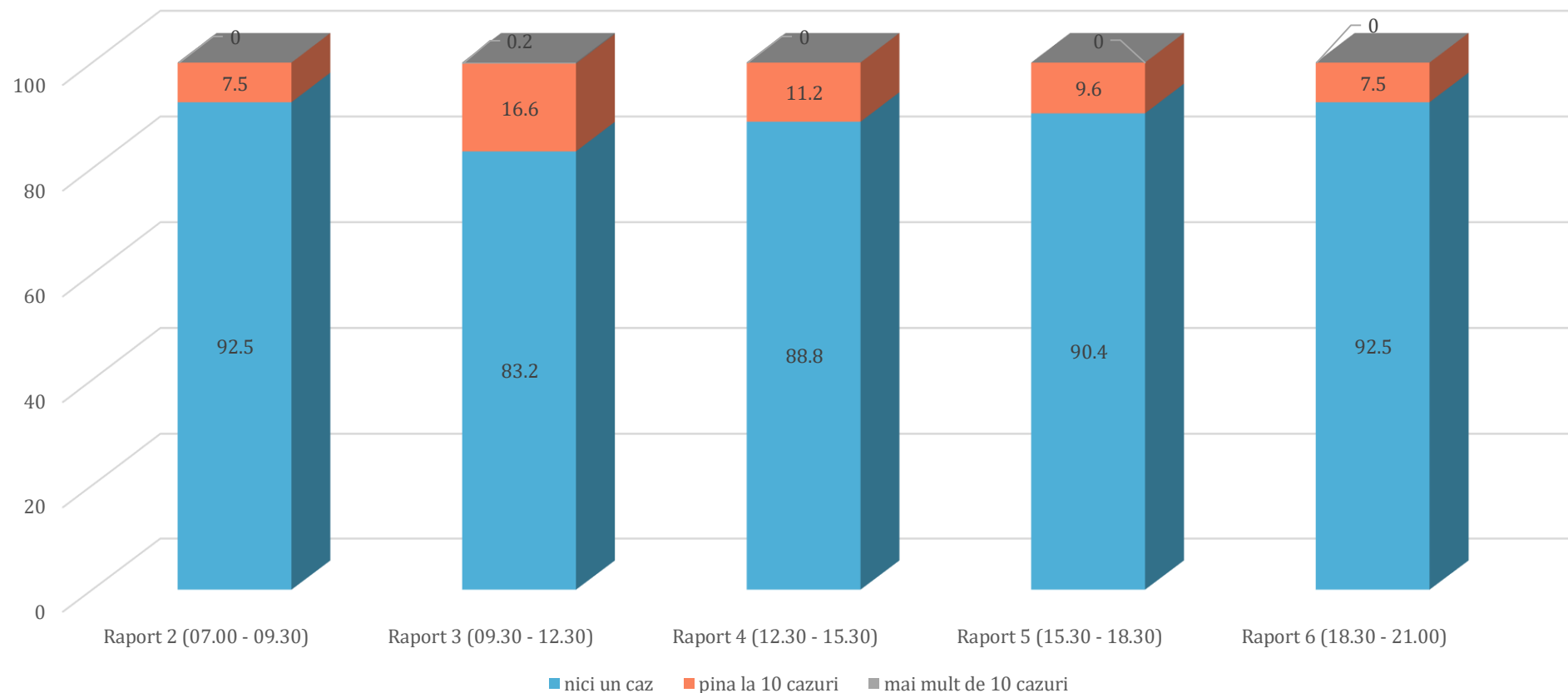
Is the polling station heated with thermal energy? (representative sample)

NO - 346 PS

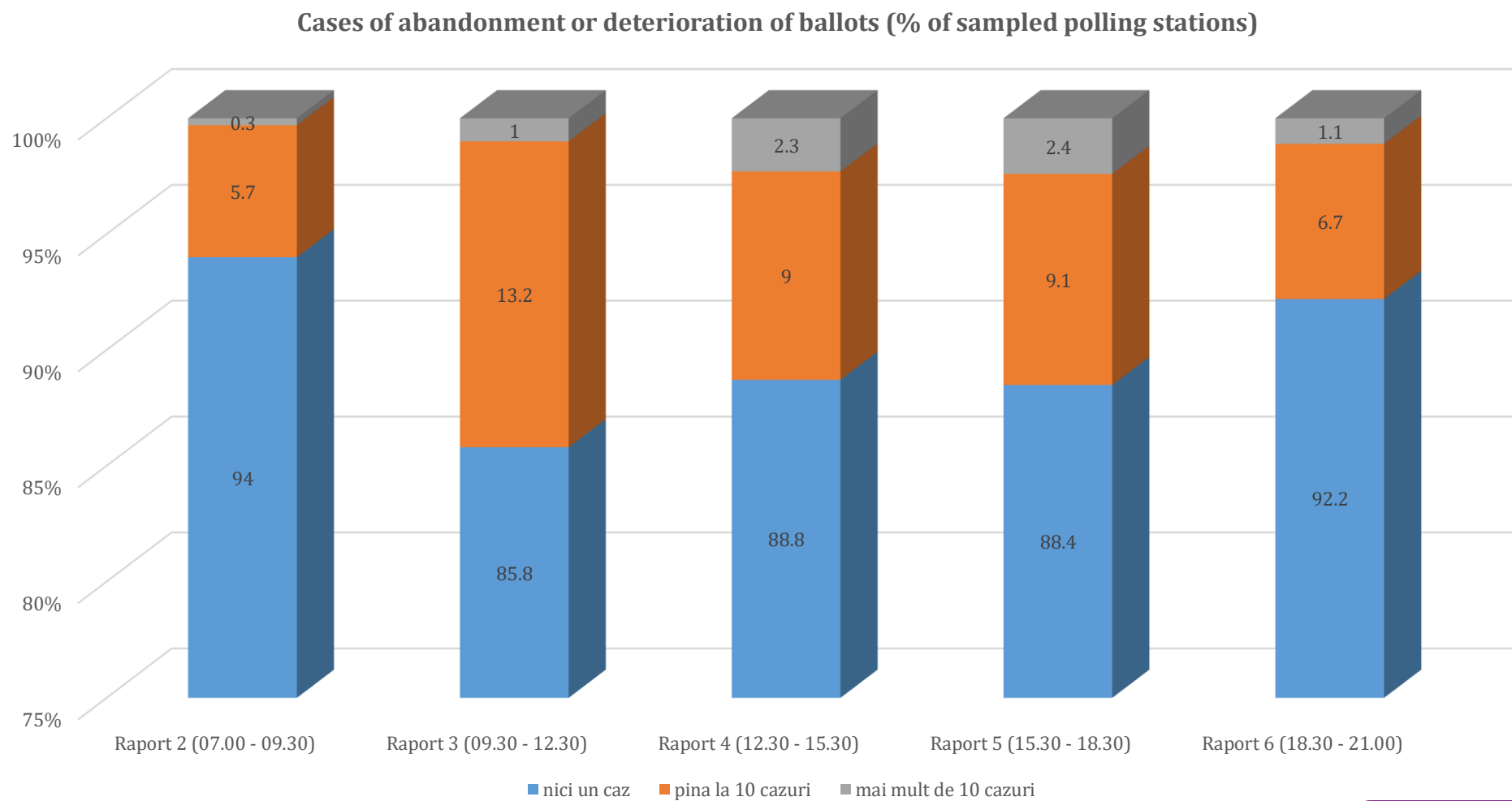


Situations of misunderstandings or conflicts between voters and election officials in the context of handing out ballots (representative sample)

Situations of misunderstandings or conflicts between voters and electoral officials observed in the context of handing out ballot for elections (% of sampled polling stations)



Cases of abandonment or deterioration of ballots (representative sample)

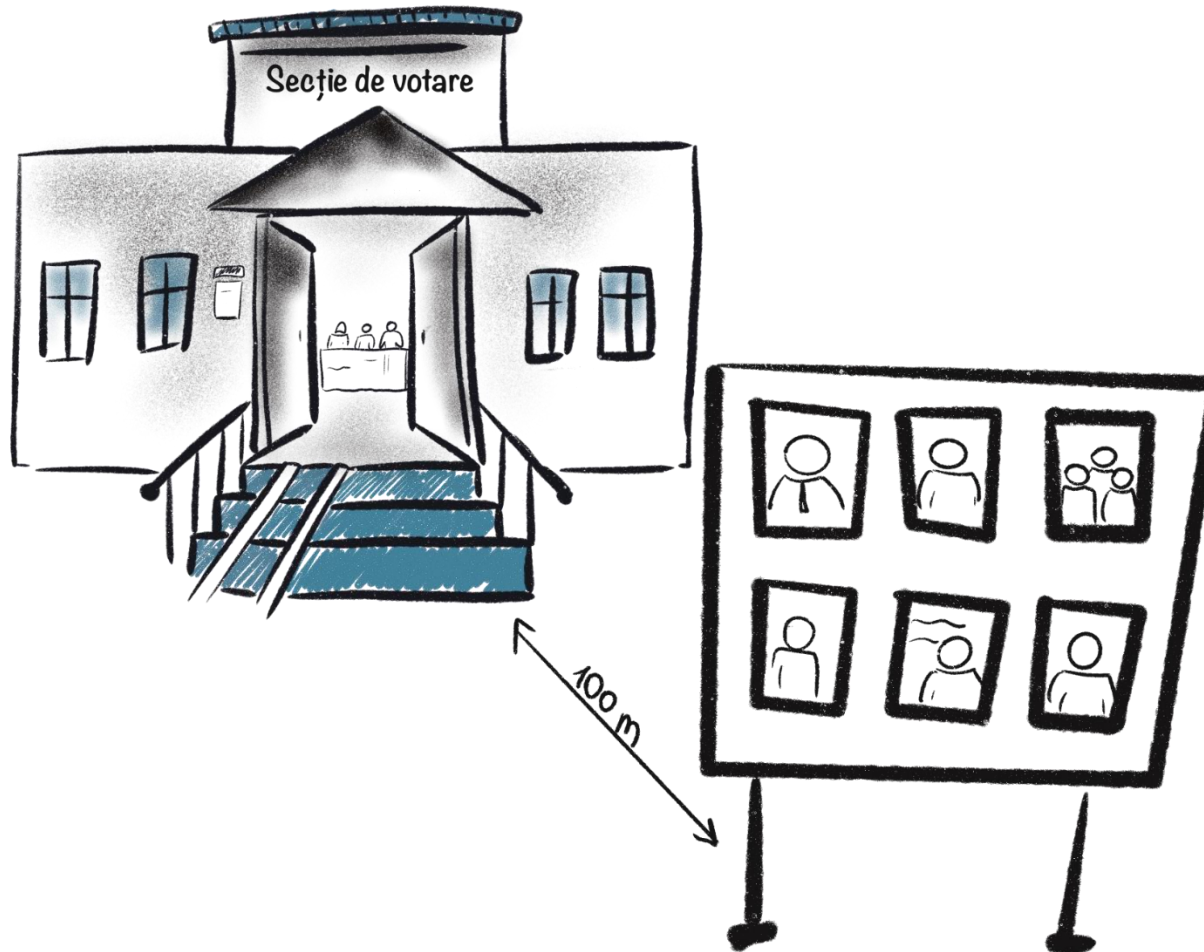


Closing of polling stations earlier or later than 9:00 PM (representative sample)



3 cases

Presence of advertising materials, posters, billboards within the radius of the polling station (100 meters from the PS premises)



36 cases

Restricted access for observers or obstruction of the free observation process in the polling station



10 cases

Ballot boxes were not sealed according to legal procedures / breakage/damage or absence of seals on ballot boxes



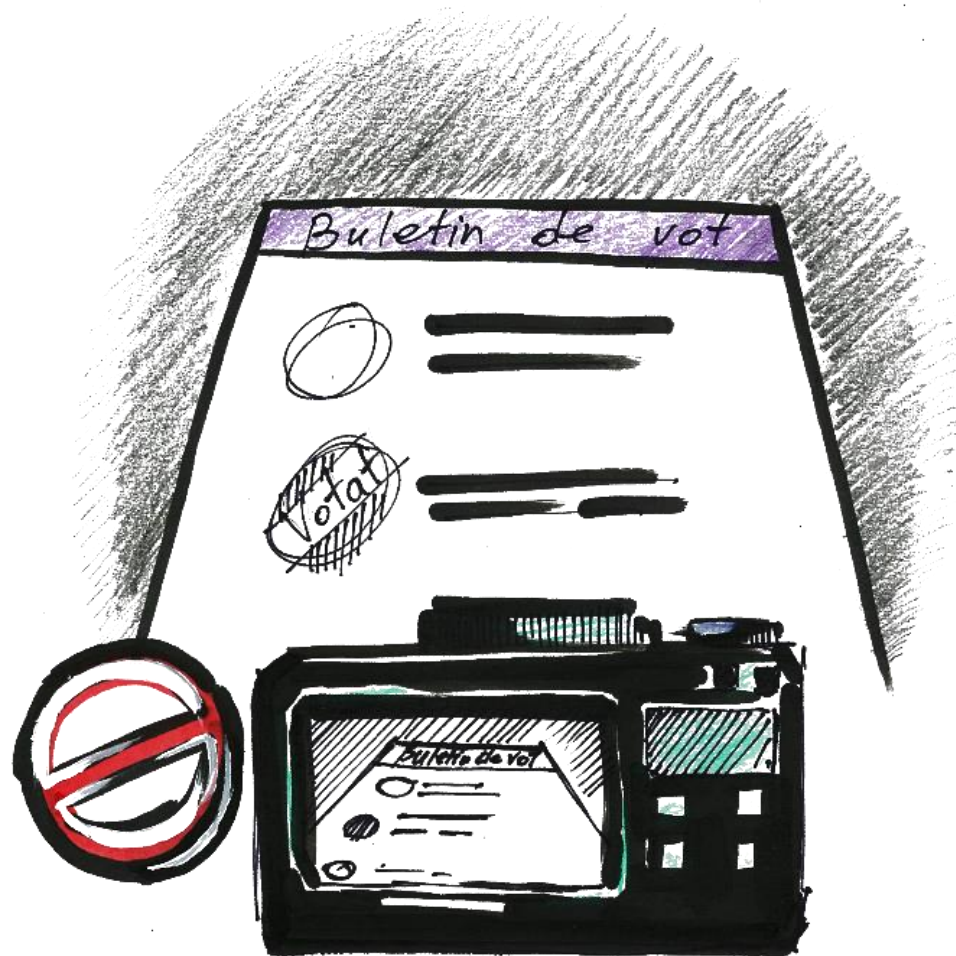
31 cases

Unauthorised presence of unauthorised persons in the polling station premises or within 100 m radius



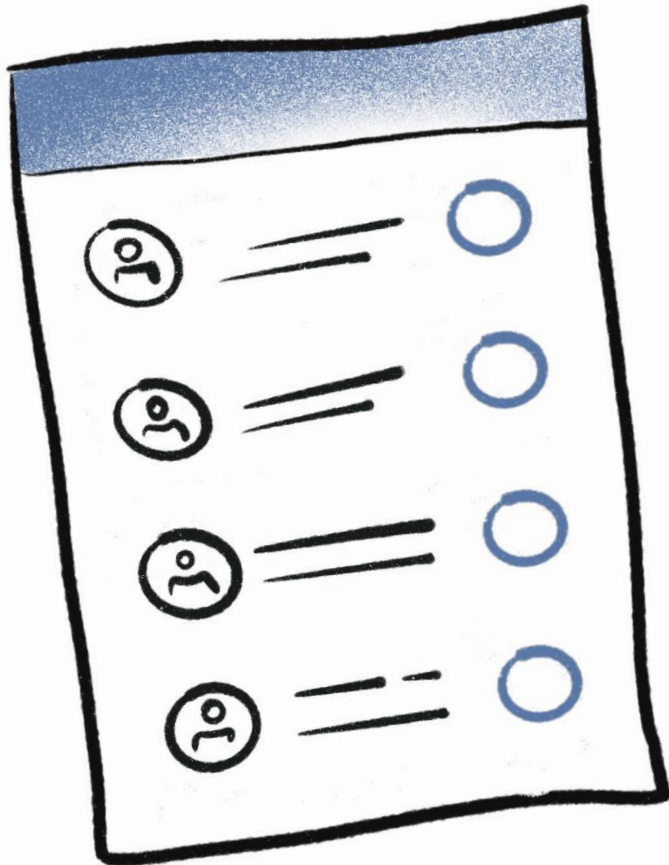
51 cases

Photographing of ballot papers, violations of the secrecy of voting



175 cases

Ballots not distributed to EBPS members are not kept in the safe/drop box inside the polling station



24 cases

Rumours, attempts or even instances of material or monetary rewards offered to voters within 100 m of the polling station to influence the voters' vote



17 cases

Electoral campaigning or black PR within 100 m perimeter and/or inside the polling station to influence the voters' choice



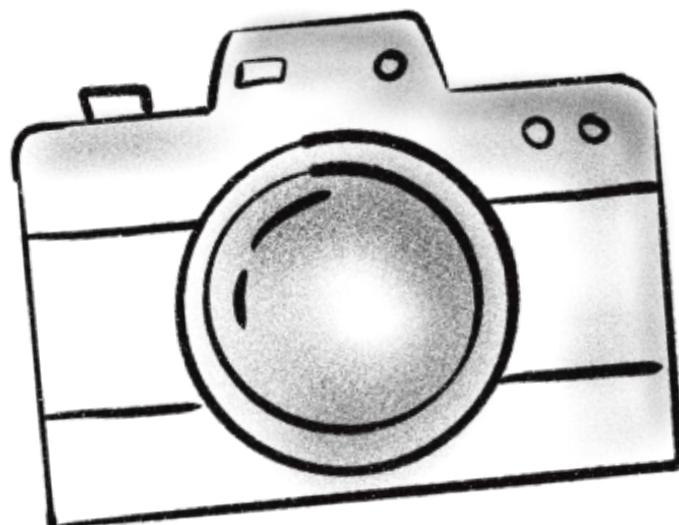
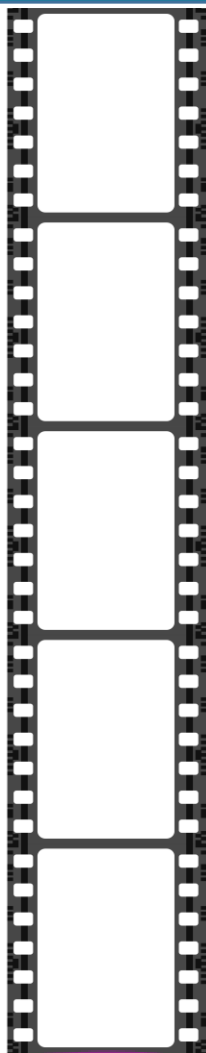
30 cases

Organised transport of voters (coaches, minibuses or other transport units that normally wouldn't be in the vicinity)



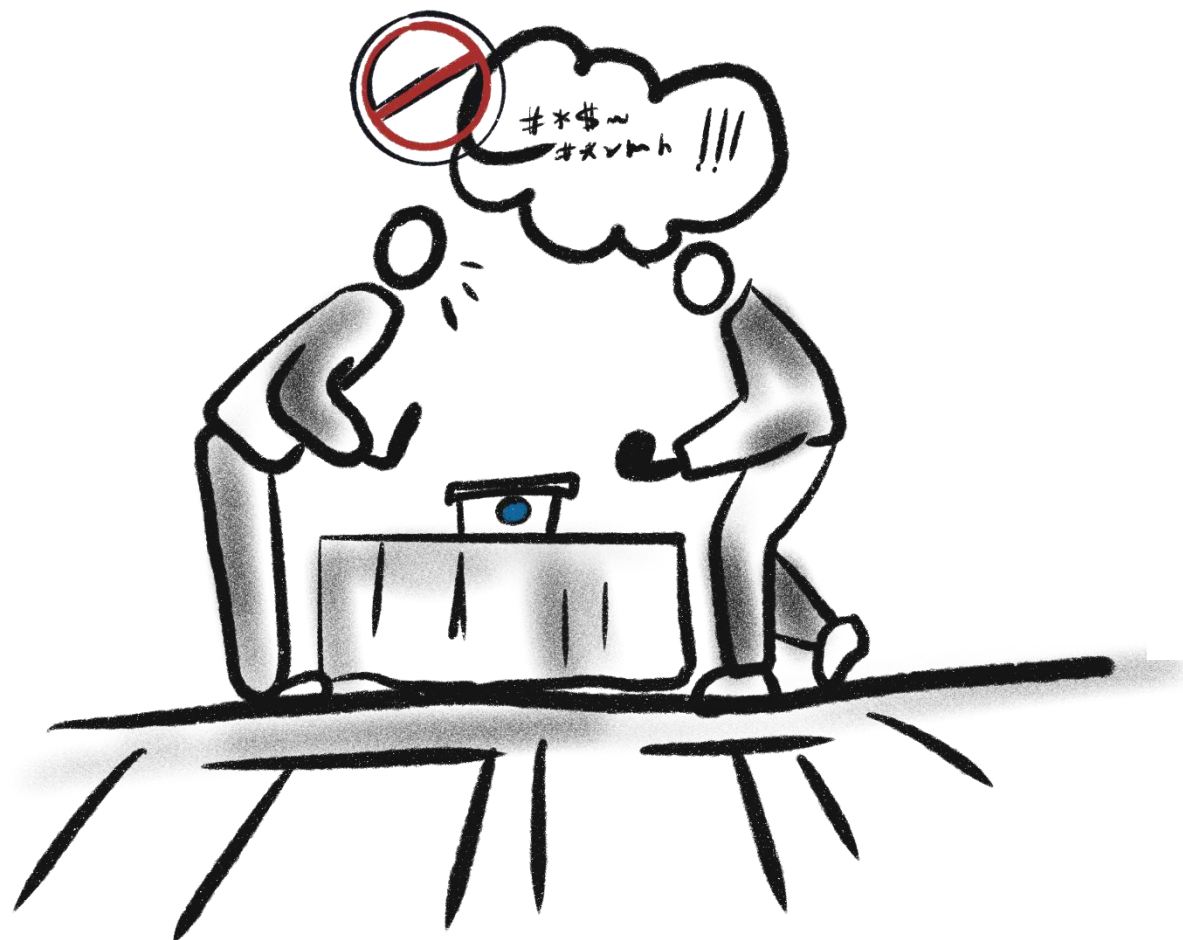
11 cases

The interruption of the filming process of electoral operations regarding the opening of the polling station or the ballot counting procedures



98 cases

Acts of violence/intimidation against voters or other individuals



10 cases

Deficiencies in the functioning of SIAS Elections system (suspension of functioning; situations where SIAS Elections system indicates that the voter has voted and the voter claims he/she did not vote)



45 cases

Deficiencies in the voters lists

(discrepancies between addresses; deceased voters;
signatures in place of other persons)

| | NUME/PRENUME | ADRESĂ |
|----|--------------|--------|
| 1 | | |
| 2 | | |
| 3 | | |
| 4 | | |
| 5 | | |
| 6 | | |
| 7 | | |
| 8 | | |
| 9 | | |
| 10 | | |

Listă

| | NUME/PRENUME | ADRESĂ |
|----|--------------|--------|
| 1 | | |
| 2 | | |
| 3 | | |
| 4 | | |
| 5 | | |
| 6 | | |
| 7 | | |
| 8 | | |
| 9 | | |
| 10 | | |

Listă

76 cases

Unjustified group voting (2 or more people in the voting booths)



61 cases

Unjustified interruption/suspension of voting at the polling station



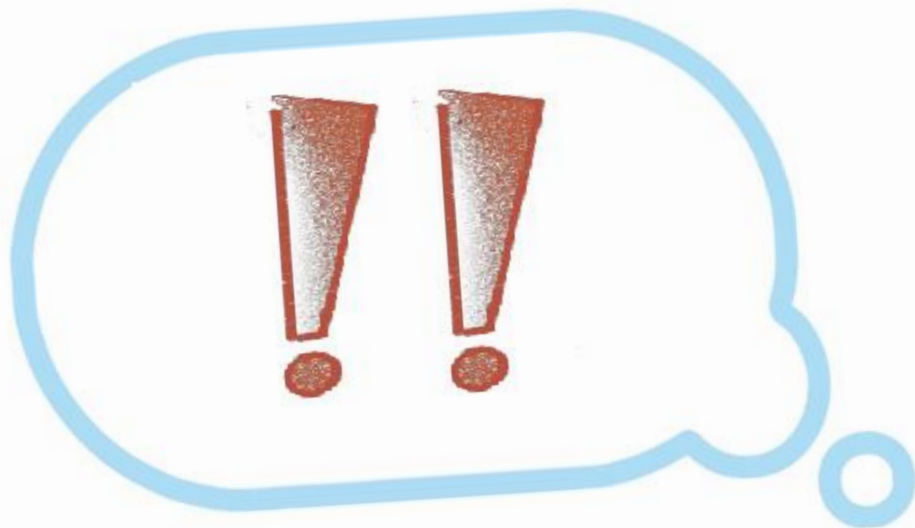
7 cases

Refusal to issue copies of all the Minutes of the requested vote count



7 cases

Others



89 cases

| Nr. | Type of Incident | Presidential Elections 1 November 2020 | | Presidential Elections 20 October 2024 |
|--------|---|---|----------|---|
| | | Turul I | Turul II | Turul I |
| 1 | Restricted access or obstructing the observation process in the PS | 6 | 6 | 10 |
| 2 | Ballot boxes were not sealed according to the legal procedures/tearing/damage or absence of seals on ballot boxes | 26 | 49 | 31 |
| 3 | Lack of the necessary in the polling station: lists of voters, ballot papers, round stamp with the number of the electoral office, stamps with "Voted", "Cancelled" inscription, special stamp with "Election 01.11.2020", seals for ballot boxes | 0 | 5 | 0 |
| 4 | Unjustified group voting (2 or more people were in the voting booths at the same time) | 96 | 17 | 61 |
| 5 | Unjustified presence of unauthorised persons in the polling station | 50 | 24 | 51 |
| 6 | Ballot papers that were not distributed to EBPS members are not kept in a safe place at the polling station | 0 | 0 | 24 |
| 7 | Rumors, attempts or even situations of material rewards or money offered to voters within the perimeter and/or near the polling station to influence them | 16 | 21 | 17 |
| 8 | Electoral campaigning or black PR in the polling station to influence the voters | 12 | 28 | 30 |
| 9 | Organised voter transportation (by buses, passenger vans or other vehicles that wouldn't normally be around) | 37 | 44 | 11 |
| 10 | Unjustified termination/suspension of voting at the polling station | 32 | 6 | 7 |
| 11 | Acts of violence or bullying against voters or other persons | 37 | 20 | 10 |
| 12 | Deficient operation of Elections SAIS (suspended functionalities; situations where Elections SAIS showed that the voter had voted, although the latter claimed he had not) | 14 | 56 | 45 |
| 13 | Deficiencies in lists of voters (gaps between addresses; deceased voters; signatures instead of other people) | 40 | 37 | 76 |
| 14 | Taking pictures of the ballot papers, other violations of secret of vote | 57 | 177 | 175 |
| 15 | Deterioration of ballot papers or other incidents related to their non-compliant use | 0 | 0 | 0 |
| 16 | Interrupted video recording of voting and ballot papers counting procedures, other incidents related to voting process recording | 33 | 25 | 98 |
| 17 | Refusal to issue copies of all the Minutes of the requested vote count | 0 | 0 | 7 |
| 18 | Presence of advertising materials, posters, billboards within the radius of the polling station (100 meters from the PS premises) | 24 | 7 | 36 |
| 19 | Others | 9 | 212 | 89 |
| Total: | | 489 | 734 | 778 |



Preliminary results on the vote count for the position of President of Republic of Moldova



| Candidate | CEC data total (98,38%) | CEC data (not including Diaspora, left bank of the Nistru river) Data calculated by Promo-LEX | Date Promo-LEX (rerepresentative sample) |
|-----------------------------------|----------------------------|--|---|
| Stoianoglo Alexandr (PSRM) | 26,31% | 29,19% | 28,44% |
| Sandu Maia (PAS) | 41,98% | 37,42% | 39,53% |
| Usatîi Renato (PN) | 13,74% | 13,71% | 13,26% |
| Tarlev Vasile (PVM) | 3,22% | 3,52% | 3,39% |
| Vlah Irina (CI) | 5,45% | 5,96% | 5,78% |
| Chicu Ion (PDCM) | 2,08% | 2,33% | 2,31% |



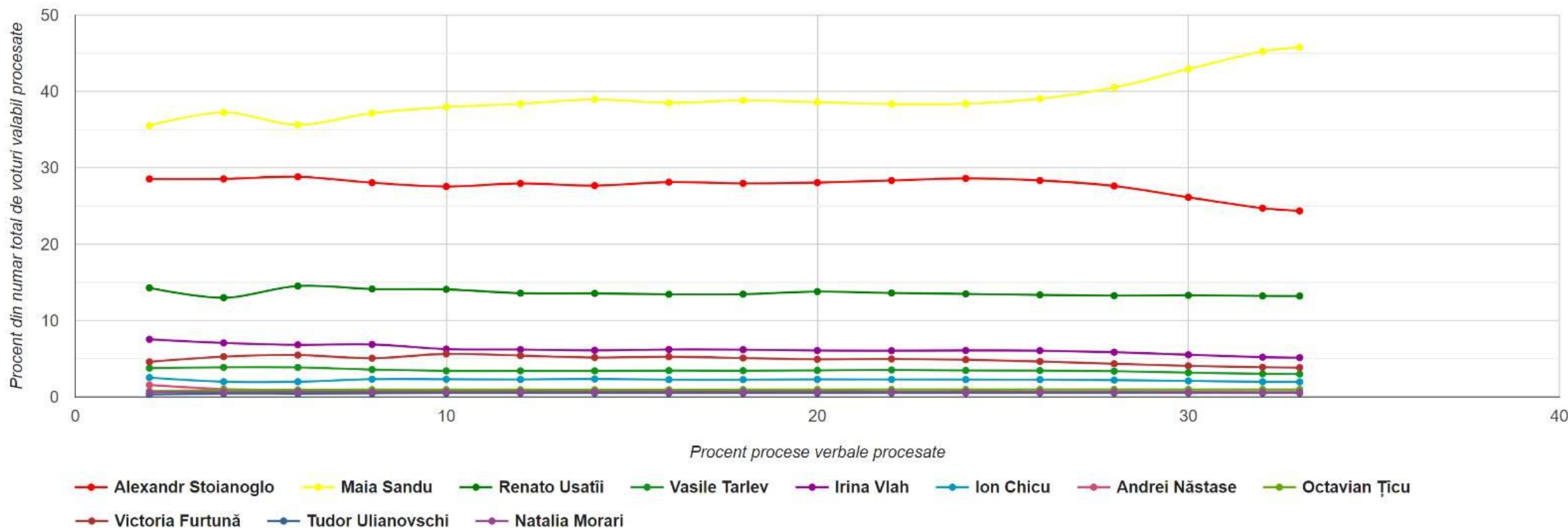
Preliminary results on the vote count for the position of President of Republic of Moldova



| Candidate | CEC data total (98,38%) | CEC data (not including Diaspora, left bank of the Nistru river) Data calculated by Promo-LEX | Date Promo-LEX (rerepresentative sample) |
|-----------------------------|----------------------------|--|---|
| Năstase Andrei (CI) | 0,64% | 0,67% | 0,68% |
| Țicu Octavian (BE Împreună) | 0,92% | 0,94% | 0,97% |
| Furtună Victoria (CI) | 4,51% | 5,04% | 4,44% |
| Ulianovschi Tudor (CI) | 0,52% | 0,56% | 0,56% |
| Morari Natalia (CI) | 0,62% | 0,66% | 0,67% |

Evolution of candidates' scores based on the number of processed protocols, percentage (including Sample data, Diaspora and left bank of the Nistru)

734 Procese verbale procesate: 33.03%



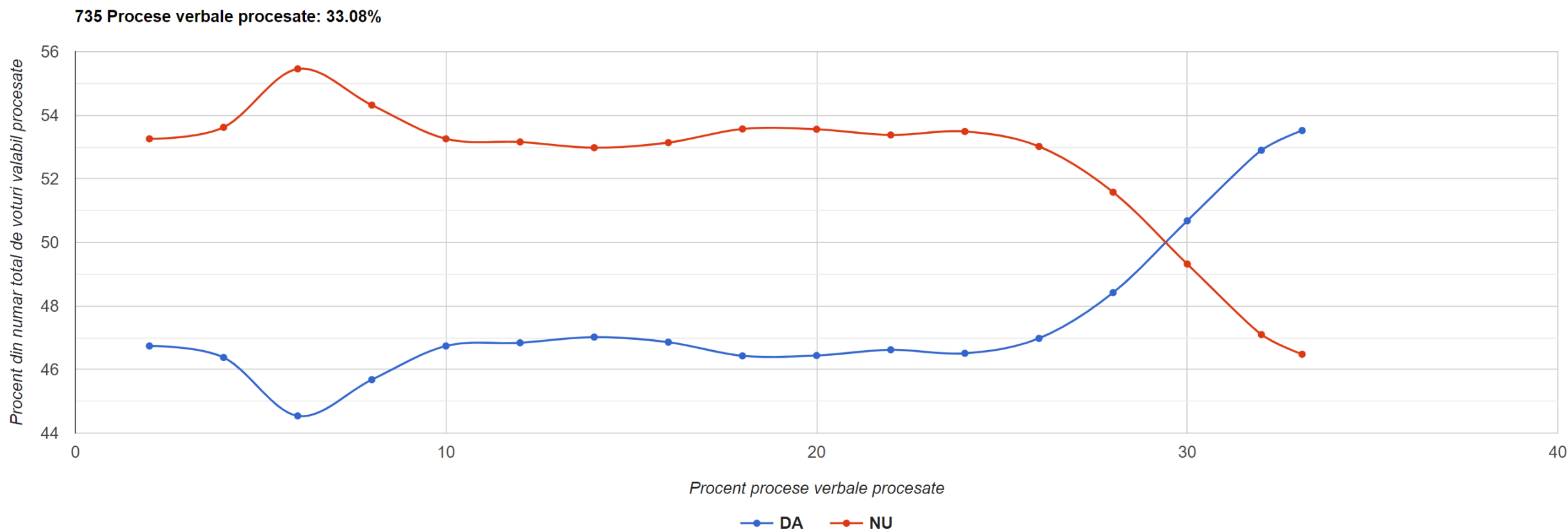


Preliminary results on the vote count for the Republican Constitutional Referendum



| Option | CEC data total (98,42%) | CEC data (not including Diaspora, left bank of the Nistru river) Data calculated by Promo-LEX | Date Promo-LEX (rerepresentative sample) |
|--------|----------------------------|--|---|
| YES | 50,08% | 45,67% | 47,55% |
| NO | 49,92% | 54,33% | 52,45% |

Evolution of the options for the republican constitutional referendum based on the number of processed protocols, percentage (including Sample data, Diaspora and left bank of the Nistru)






Presentation of preliminary results regarding the quick count of votes (representative sample)

| | |
|---|--------------|
| Total no. of PS (nationwide) | 1987 |
| No. of PS observed by Promo-LEX | 614 |
| No. of Protocols received | 614 |
| No. of Protocols wrong/invalidated | 19/18 |
| No. of Protocols missing | 0/1 |

Preliminary results based on the data collected
by Promo-LEX at 9:00



Protocols that contain errors (for the position of President of the Republic of Moldova, representative sample)

| Type of errors | Number |
|----------------|--------|
| $D = F+H$ | 4 |
| $E = C-D$ | 1 |
| $C \geq D$ | 0 |
| $H = G1+G2$ | 10 |
| $F = D-H$ | 4 |
| $I=C+J$ | 5 |
| $J = I-C$ | 5 |

Protocols that contain errors (for the republican consitutional referendum, representative sample)

| Type of errors | Number |
|----------------|--------|
| $D = F+H$ | 5 |
| $E = C-D$ | 3 |
| $C \geq D$ | 1 |
| $H = G1+G2$ | 5 |
| $F = D-H$ | 5 |
| $I=C+J$ | 13 |
| $J = I-C$ | 13 |

A hand is shown from the left, placing a white ballot with a black arrow pointing left into a white ballot box. The box has a rectangular opening on top.

Thank you for you attention!

A hand is shown from the right, holding a white megaphone and pointing it towards the center. There are several short lines radiating from the megaphone's opening, indicating sound or attention.The background is a solid blue color. There are several decorative elements: a large green circle in the top left corner, a green circle with concentric lines in the top right corner, a green circle with concentric lines in the bottom left corner, and a purple circle in the bottom right corner.